

FORCE TOOLS

For The
Way...

You Work!



since 1997

RONDODOO

www.rondodoo.hr





SIoux TOOLS POWER TOOLS WARRANTY

Except as otherwise provided herein, Sioux Tools warrants the product for 1 year from the date of original purchase against defects in workmanship and materials that prevent their use. Consumable parts are warranted, at the time of sale, against defects in workmanship and materials that prevent their use. Consumable parts are goods reasonably expected to be used up or damaged during use, including but not limited to, cables, sensors and batteries. This warranty only extends to the original Buyer and cannot be transferred or assigned.

In the event the product fails to give satisfactory service due to a defect in materials or workmanship during the specified warranty period, at its option, Sioux Tools will repair or replace the product or provide a refund by repaying or crediting the Buyer with an amount equal to the purchase price of the product. Repair, replacement or refund shall be at the sole election and expense of Sioux Tools and is Buyer's exclusive remedy in place of all other rights and remedies. To obtain warranty service, contact Sioux Tools or a Sioux Tools representative or distributor. Proof of purchase must be provided with all warranty service requests. By repairing or replacing the product, or providing a refund, Sioux Tools does not waive a claim that the product nevertheless has been subject to abnormal use.

Sioux Tools does not provide any warranty for (i) recalibration; or (ii) product subject to "abnormal use". "Abnormal use" includes misuse, accident, modification, alteration, unreasonable or improper use, abuse, neglect, lack of maintenance, use in product related service, or use after the product is significantly worn. Further, this warranty DOES NOT cover any damage to, or in operability or improper operation of the product caused by, resulting from or attributable to (1) installation or maintenance; (2) fire, water, wind, lightning or other natural causes; (3) damaged caused by adverse environmental conditions, including without limitation, extreme temperatures, moisture, corrosive elements, dust or other air contaminants, radio frequency interference, electric power failure, power line voltages beyond those specified for the product, unusual physical, electrical or electromagnetic stress and/or other condition outside of Sioux Tools environmental specifications; (4) use of the product in combination or connection with other product, attachments, supplies or consumables not manufactured or distributed by Sioux Tools; or (5) failure to comply with any applicable federal, state or local regulation, requirement or specification governing emission analyzers and related supplies or consumables. Parts and labor needed to maintain your product and any replacement parts necessary do to normal wear and tear are not covered by this written warranty and are the Buyer's responsibility.

THE FOREGOING WARRANTY IS IN LIEU OF AND EXCLUDES ALL OTHER WARRANTIES NOT EXPRESSLY SET FORTH HEREIN, WHETHER EXPRESS OR IMPLIED BY OPERATION OF LAW OR OTHERWISE, INCLUDING BUT NOT LIMITED TO ANY IMPLIED WARRANTIES OF MERCHANTABILITY OR FITNESS FOR A PARTICULAR PURPOSE AND SETS FORTH THE SOLE AND EXCLUSIVE REMEDY IN CONTRACT, TORT, STRICT LIABILITY OR OTHERWISE. SIOUX TOOLS DOES NOT GRANT ANY OTHER PERSON OR ENTITY PERMISSION TO CREATE FOR IT ANY WARRANTY, LIABILITY OR OBLIGATION IN CONNECTION WITH ITS PRODUCTS.

Sioux Tools shall not be liable for any incidental, special or consequential losses, costs or damages incurred by Buyer or others, directly or indirectly arising from the sale, handling or use of the products, or from any other cause with respect to the products or this warranty, whether such claim is based upon breach of contract, breach of warranty, strict liability in tort, negligence or any other legal theory (including without limitation, lost profits, revenues, anticipated sales, businesses opportunities, good will, or interruption of business or other injury or damage).

To the extent allowed by applicable law, this warranty and all rights and obligations hereunder, including matters of construction, validity and performance, shall be governed by the substantive laws of the state of Wisconsin, without giving effect to the principles of conflicts of law thereof.

ISO 9001

In 1997 Sioux Tools received its ISO 9001 certification. This certification is essential to doing business in today's global marketplace. It affirms our dedication to quality and our continued commitment to improvement. It assures our customers that the products they purchase will consistently live up to the promise of performance. It also validates our target goal of achieving maximum quality in every stage of the process — from the initial concept and development all the way through the delivery of spare parts. Our customers can be certain that Sioux tools will live up to their high expectations and provide a long, trouble-free life.





CATALOG GUIDE

The Force of the Tool Industry

Sioux Tools is known around the world for quality, durability and performance. Our extensive and always expanding line of industrial power tools are engineered to make any job easier, safer and more efficient. We build tools that stand up to the demanding specifications required by today's industrial manufacturing, assembly and finishing needs.

Sioux Tools designs the tool to fit the application. Many businesses require tools that can deliver high performance but are not subject to the constant demands of industrial applications. To meet these requirements, Sioux developed the Force line. The Force lineup is designed primarily for the MRO (Maintenance Repair Operations) and manufacturing support functions, however, the quality of these tools will allow them to go beyond these typical support applications to fit the bill in many of your manufacturing processes. Force tools are designed to complement the durability and performance of our industrial line. Check out the following line of Force tools in this brochure.

Drills • Ratchet Wrenches • Impact Wrenches Grinders • Cut-off Tool • Sanders Hammers • Scalers • Reciprocating Saw

Standard Equipment

Under this heading a specification is given for each type of tool and of the parts (nipples, keys, guards, etc.) supplied with the tool. A parts list and safety and instruction manual are always included in the package with every tool.

Air consumption

The air consumption of the tools is stated in standard cubic feet per minute (scfm) and liters per second (l/s) and relates to free air, i.e., the compressed air expanded to atmospheric pressure. Unless otherwise stated, the figures are valid at a working pressure of 90 psig (6.2 bar) and indicate the maximum air consumption unless otherwise stated. Maximum air consumption for non-governed tools is achieved at free speed when the tool is running at no load. A tool with governed speed control has the maximum air consumption at the maximum power output.

Speed

The tool speeds are indicated in revolutions per minute, (rpm), and indicate the free speed, i.e., the speed at which the tool runs at no load and at a working pressure of 90 psig (6.2 bar), unless otherwise specified. The speed at maximum output is estimated as 50% of the free speed for non-governed tools and 80-90% of the free speed for tools with governed speed control.

Weight and Length

The weight of the tools are listed in both pounds (lb) and kilograms (kg), and the length is listed in both inches (in) and millimeters (mm).

Side to Center

This measurement is taken from the center of the tool to the outside edge. It is useful for applications requiring the tool to fit into a precise or limited space.

Quick Conversion Chart

	Torque		Power	
Length	1 in.	= 0.0254 m	1 kgm/s	= 9.8067 w
	1 m	= 39.3701 in.	1 hp	= 745.7 w
	1 m	= 3.2808 ft	1 kw	= 101.972 kgm/s
	1 in.	= 25.4 mm	1 kw	= 1.3410 hp
	1 ft	= 304.8 mm		
1 mm	= 0.03937 in.			
Weight	1 lb	= 0.4536 kg	Flow	
	1 kg	= 2.2046 lb	1 m3/min	= 16.6667 l/s
			1 cfm	= 0.4720 l/s
			1 m3/h	= 0.2778 l/s
			1 l/s	= 2.1189 cfm
		Pressure		
		1 bar	= 100 kPa	
		1 kg/cm2 (at)	= 98.0665 kPa	
		1 psi	= 6.8948 kPa	
		1 kPa	= 0.145 psi	
		1 kPa	= 0.01 bar	
		1 kPa	= 0.0101972 kg/cm2 (at)	



DRILLS

We Take On Any Job... Bit By Bit

Sioux Tools offers a wide selection of Force drills. With free speeds from 800 to 2,600 rpm we have the right drill for most applications and materials. The gears are designed and built tough to handle demanding jobs, yet even under load, operate quietly and efficiently. Composite housings have tough aluminum interior with comfortable nylon exterior. Force drills come in both reversing and non-reversing models.

PISTOL GRIP DRILLS



- 5440C**
Features:
- Keyed Chuck
 - Ergonomic Housing
 - Non-Reversible



- 5440CKL**
Features:
- Keyless Chuck
 - Ergonomic Housing
 - Non-Reversible

Non-Reversing 0.5 hp (0.37 kW)



Model Number	Chuck Capacity		Free Speed rpm	Weight		Length		Spindle Thread
	in	mm		lb	kg	in	mm	
Keyed Chuck								
5440C	3/8	10	2600	2.3	1.05	6.5	165	3/8"-24
Keyless Chuck								
5440CKL	3/8	10	2600	2.3	1.05	6.8	170	3/8"-24

General: Air Inlet Size: 1/4" NPT • Recommended Hose Size: 3/8" (10 mm) • Performance rated @ 90 psig (6.2 bar) air pressure

Standard Equipment: Parts List • Safety and Instruction Manual



- 5445CR**
Features:
- Keyed Chuck
 - Ergonomic Housing
 - Reversible



- 5450CR**
Features:
- Keyed Chuck
 - Ergonomic Housing
 - Reversible
 - Support Handle



- 5450CRKL**
Features:
- Keyless Chuck
 - Ergonomic Housing
 - Reversible
 - Support Handle

Reversible 0.5 hp (0.37 kW)



Model Number	Chuck Capacity		Free Speed rpm	Weight		Length		Spindle Thread
	in	mm		lb	kg	in	mm	
Keyed Chuck								
5445CR	3/8	10	2000	2.3	1.05	6.5	165	3/8"-24
5450CR	1/2	13	800	2.9	1.35	7.6	195	3/8"-24
Keyless Chuck								
5445CRKL	3/8	10	2000	2.3	1.05	6.8	175	3/8"-24
5450CRKL	1/2	13	800	2.9	1.35	7.9	200	3/8"-24

General: Air Inlet Size: 1/4" NPT • Recommended Hose Size: 3/8" (10 mm) • Performance rated @ 90 psig (6.2 bar) air pressure

Standard Equipment: Parts List • Safety and Instruction Manual



DRILLS

INLINE AIR DRILLS

Features:

- Non-Reversible
- Lockoff Lever Throttle
- Built-in Speed Regulator
- Rear Exhaust
- Ergonomic Housing

Non-Reversing 0.5 hp (0.37 kW)



Model Number	Chuck Capacity		Free Speed rpm	Weight		Length		Spindle Thread
	in	mm		lb	kg	in	mm	
Keyed Chuck								
5434C	3/8	10	2500	2.2	1.00	8.7	220	3/8"-24
Keyless Chuck								
5434CKL	3/8	10	2500	2.2	1.00	8.9	225	3/8"-24



5434C



5434CKL

General: Air Inlet Size: 1/4" NPT • Recommended Hose Size: 3/8" (10 mm) • Performance rated @ 90 psig (6.2 bar) air pressure

Standard Equipment: Parts List • Safety and Instruction Manual

Features:

- Reversible via Twist Ring
- Rear Exhaust
- Ergonomic Housing

Reversing 0.5 hp (0.37 kW)



Model Number	Chuck Capacity		Free Speed rpm	Weight		Length		Spindle Thread
	in	mm		lb	kg	in	mm	
Keyed Chuck								
5430C	3/8	10	1400	2.3	1.05	8.5	215	3/8"-24
Keyless Chuck								
5430CKL	3/8	10	1400	2.3	1.05	8.6	220	3/8"-24

General: Air Inlet Size: 1/4" NPT • Recommended Hose Size: 3/8" (10 mm) Performance rated @ 90 psig (6.2 bar) air pressure

Standard Equipment: Parts List • Safety and Instruction Manual

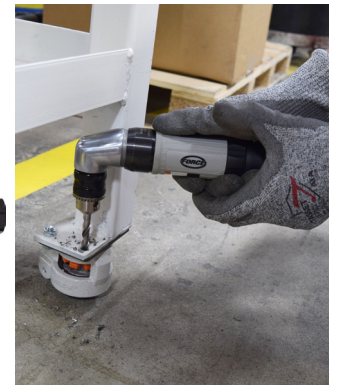


5430C



5430CKL

RIGHT ANGLE DRILLS



2352

Quick Change Chuck: Part No. 2352

Adapts 3/8"-24 threaded spindles to 1/4" hex quick change



SP510663 / SP510664

Side Handle

Part Number	Description	Used On
510664	Clamp	5450CR
510663	Handle	5450CR

SP65562



SP67398

Drill Chucks & Keys

Chuck Capacity	Thread Size	Chuck Part No	Key Part No	Key Holder No
0 - 1/4"	3/8"-24	SP21019B	30000	
1/16" - 3/8"	3/8"-24	SP21133	30002	14273
5/64" - 1/2"	3/8"-24	SP21132	30429	
1/16" - 3/8" ¹	3/8" - 24	SP65562		
1/32" - 3/8" ¹	3/8"-24	SP67398		

¹Keyless Chuck • Keyed chucks include key



ASSEMBLY

We're Making A Big Impact

Built to a higher level of quality, Force Ratchets and Impact Wrenches and Impact Drivers are built a step above the standard. Manufactured from high quality materials, and utilizing the most advanced motor and clutch designs, these tools are constructed to hold in the toughest working environments.

RATCHET WRENCHES

Features:

- Steel Angle Head
- Aluminum Housing
- Ergonomic Composite Grip



5009



5011

Ratchet Wrenches



Model Number	Drive Size		Bolt Cap Grade 5		Maximum Torque		Free Speed		Weight		Length		Avg Air Consumption	
	in		in	mm	ft lb	Nm	rpm		lb	kg	in	mm	scfm	l/s
5007	3/8		5/16	8	20	27	265		1.3	0.55	6.6	168	10	4.7
5009	1/4		5/16	8	20	27	265		1.5	0.5	6.6	168	10	4.7
5011	3/8		7/16	11	50	68	185		2.6	1.2	10.8	274	22	10
5013	1/2		7/16	11	50	68	185		2.6	1.2	10.8	274	22	10

General: Air Inlet Size: 1/4" NPT • Recommended Hose Size: 3/8" (10 mm) • Performance rated @ 90 psig (6.2 bar) air pressure

Standard Equipment: Head Cover • Parts List • Safety and Instruction Manual

3/8" IMPACT WRENCHES

5045

Features:

- Twin Hammer Mechanism
- Swivel Inlet
- Bail



5038C

Features:

- Twin Hammer Mechanism
- Robust 3-Piece Metal Housing
- High Torque Output



5338A

Features:

- Twin Hammer Mechanism
- Lightweight Composite Housing
- Quiet and Ergonomic



3/8" Impact Wrenches



Model Number	Drive Size	Socket Retainer Style	Bolt Cap Grade 5		Working Torque Range		Maximum Torque		Blows Per Minute	Free Speed	Weight		Length		Avg Air Consumption	
			in	mm	ft lb	Nm	ft lb	Nm			rpm	lb	kg	in	mm	scfm
5045	3/8	Friction	3/8	10	15-160	20-217	175	237	1850	9500	2.5	1.1	7.6	193	18	8.5
5045P	3/8	Pin	3/8	10	15-160	20-217	175	237	1850	9500	2.5	1.1	7.6	193	18	8.5
5038C	3/8	Friction	7/16	12	50-230	70-310	310	420	1300	10000	3.4	1.5	6	152	30	14
5039C	3/8	Pin	7/16	12	50-230	70-310	310	420	1300	10000	3.4	1.5	6	152	30	14
5338A	3/8	Friction	7/16	12	50-180	70-240	250	340	1100	10000	2.7	1.2	6.5	165	20	9.4
5338AP	3/8	Pin	7/16	12	50-180	70-240	250	340	1100	10000	2.7	1.2	6.5	165	20	9.4

General: Air Inlet Size: 1/4" NPT • Recommended Hose Size: 3/8" (10 mm) • Performance rated @ 90 psig (6.2 bar) air pressure

Standard Equipment: Parts List • Safety and Instruction Manual



ASSEMBLY

1/2" IMPACT WRENCHES

5000A

- Features:
- Twin Hammer Mechanism
 - Front Exhaust



5050C

- Features:
- Twin Hammer Mechanism
 - Robust 3-Piece Metal Housing
 - High Torque Output



5250C

- Features:
- Pin Clutch Mechanism
 - Robust 3-Piece Metal Housing
 - High Torque Output



5350A

- Features:
- Twin Hammer Mechanism
 - Lightweight Composite Housing
 - Quiet and Ergonomic



1/2" Impact Wrenches



Model Number	Drive Size	Socket Retainer Style	Bolt Cap Grade 5		Working Torque Range		Maximum Torque		Blows Per Minute	Free Speed	Weight		Length		Avg Air Consumption	
	in		in	mm	ft lb	Nm	ft lb	Nm		rpm	lb	kg	in	mm	scfm	l/s
5000A	1/2	Friction	5/8	16	80-300	110-410	425	580	1100	8000	5.6	2.5	7.4	188	30	14
5000AL	1/2	Friction	5/8	16	80-300	110-410	425	580	1100	8000	5.8	2.6	9.4	240	30	14
5050C	1/2	Friction	5/8	16	100-370	140-500	500	680	1100	7500	5.8	2.6	7.6	193	35	16
5050CL	1/2	Friction	5/8	16	100-370	140-500	500	680	1100	7500	6.0	2.7	9.7	246	35	16
5051C	1/2	Pin	5/8	16	100-370	140-500	500	680	1100	7500	5.8	2.6	7.6	193	35	16
5250C	1/2	Friction	5/8	16	100-370	140-500	500	680	860	7000	5.9	2.7	7.9	201	35	16
5350A	1/2	Friction	5/8	16	80-330	110-450	450	610	1000	7000	4.6	2.07	6.7	170	28	13
5350AP	1/2	Pin	5/8	16	80-330	110-450	450	610	1000	7000	4.6	2.07	6.7	170	28	13
5350AL	1/2	Pin	5/8	16	80-330	110-450	450	610	1000	7000	4.8	2.17	8.7	220	28	13

General: Air Inlet Size: 1/4" NPT • Recommended Hose Size: 3/8" (10 mm) • Performance rated @ 90 psig (6.2 bar) air pressure

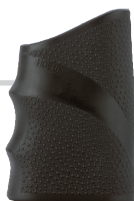
Standard Equipment: Parts List • Safety and Instruction Manual

ASSEMBLY ACCESSORIES

Ergonomic Handle Grip

Part No. 5002

For use with Model 5000A Impact



Quick Change Chuck

Adapts male square drive to female hex quick change

Part Number	Drive Size		Color
	Input (Square Drive)	Output (Hex)	
2530	3/8"	1/4"	1-13/16"
2520	1/2"	7/16"	



ASSEMBLY



3/4" IMPACT WRENCHES



5075C

Features:

- Twin Hammer Mechanism
- Robust 3-Piece Metal Housing with Steel Nose Housing
- High Torque Output
- Rubber Grip Pad



5090C

3/4" Impact with 1" Anvil

Features:

- Twin Hammer Mechanism
- Robust 3-Piece Metal Housing with Steel Nose Housing
- High Torque Output
- Rubber Grip Pad



5375A

Features:

- Twin Hammer Mechanism
- Lightweight Composite Housing
- Quiet and Ergonomic



3/4" Impact Wrenches



Model Number	Drive Size in	Socket Retainer Style	Bolt Cap Grade 5		Working Torque Range		Maximum Torque		Blows Per Minute	Free Speed rpm	Weight		Length		Avg Air Consumption	
			in	mm	ft lb	Nm	ft lb	Nm			lb	kg	in	mm	scfm	l/s
5075C	3/4	Friction/Hole	7/8	20	300-800	410-1090	1100	1500	800	5000	12.5	5.7	8.9	226	62	29
5075CL	3/4	Friction/Hole	7/8	20	300-800	410-1090	1100	1500	800	5000	14.5	6.6	15.2	386	62	29
5090C	1	Friction/Hole	7/8	20	300-800	410-1090	1100	1500	800	5000	12.8	5.8	9.1	231	62	29
5375A	3/4	Friction/Hole	7/8	20	275-700	370-950	950	1290	900	5000	8.5	3.8	9.5	240	40	19
5375AP	3/4	Hole	7/8	20	275-700	370-950	950	1290	900	5000	8.5	3.8	9.5	240	40	19

General: Air Inlet Size: 3/8" NPT • Recommended Hose Size: 1/2" (25 mm) • Performance rated @ 90 psig (6.2 bar) air pressure

Standard Equipment: Parts List • Safety and Instruction Manual



ASSEMBLY

1" IMPACT WRENCHES

5092C

Features:

- Rocking Dog Clutch
- Robust 3-Piece Metal Housing
- 4-Bolt Side Handle for Extra Durability



5093C

Features:

- Rocking Dog Clutch
- Robust 3-Piece Metal Housing
- 4-Bolt Side Handle for Extra Durability
- Steel Skidplates
- Interchangeable Trigger



5095C

Features:

- Twin-Hammer Mechanism
- Robust 3-Piece Metal Housing
- Lightweight and Compact
- Steel Skidplates
- Interchangeable Trigger



1" Impact Wrenches



Model Number	Drive Size in	Socket Retainer Style	Bolt Cap Grade 5		Working Torque Range		Maximum Torque		Blows Per Minute	Free Speed rpm	Weight		Length		Avg Air Consumption	
			in	mm	ft lb	Nm	ft lb	Nm			lb	kg	in	mm	scfm	l/s
5092C	1	Friction/Hole	1-1/8	27	600-1300	820-1770	1850	2520	440	4800	22.5	10.2	10.9	277	80	38
5092CL	1	Friction/Hole	1-1/8	27	600-1300	820-1770	1850	2520	440	4800	25.4	11.5	16.8	427	80	38
5093C	1	Friction/Hole	1-1/8	27	600-1400	820-1900	1950	2650	460	5000	23.8	10.8	13.5	343	80	38
5093CL	1	Friction/Hole	1-1/8	27	600-1400	820-1900	1950	2650	460	5000	26.7	12.1	19.8	503	80	38
5095C	1	Friction/Hole	1	24	500-1100	680-1500	1600	2180	730	4500	14.7	6.7	12.5	318	52	25
5095CL	1	Friction/Hole	1	24	500-1100	680-1500	1600	2180	730	4500	17.5	7.9	18.1	460	52	25

General: Air Inlet Size: 1/2" NPT • Recommended Hose Size: 1/2" (25 mm) • Performance rated @ 90 psig (6.2 bar) air pressure

Standard Equipment: Parts List • Safety and Instruction Manual • D-Style Support Handle



Socket Retaining Pins with "O" Rings

Retaining Pin	"O" Ring	For Use On
34911	14318	3/4" Dr. Sockets 6620-6638
34664	14317	3/4" Dr. Sockets 6640-6654
34665	14319	Adaptor 2568, All 1" Dr. Sockets



ABRASIVE

Make Easy Work Out Of A Daily Grind

Force grinders are ready to take on any application with the power to make the job fast and easy. This means new speeds and attachments to handle increased precision with ergonomic comfort. Our line-up of Force Grinders continues to be among the most popular in the industry. The choice of light, medium and heavy-duty performance allow you to own the right tool for the right job that remains cost-effective. We have both straight and right angle models to fit any application.

DIE GRINDERS



5977C



5978C



5979C

Pencil Die Grinders



Model Number	Collet Size	Free Speed	Weight		Length		Air Consumption	
		rpm	lb	kg	in	mm	scfm	l/s
0.1 hp (0.07 kW) Right Angle								
5977C	1/8	70000	0.45	0.20	6.0	152	5.8	2.7
0.1 hp (0.07 kW) Straight								
5978C	1/8	54000	0.25	0.11	5.3	135	6.0	2.8
5979C	1/8	70000	0.25	0.11	5.3	135	7.0	3.3

General: Air Inlet Size: 1/4" NPT • Recommended Hose Size: 1/4" (6 mm) • Performance rated @ 90 psig (6.2 bar) air pressure

Standard Equipment: 60' (1,524 mm) hose with hose protector included • Parts List • Safety and Instruction Manual • Spindle Wrenches



5053C



5054C

Straight Die Grinders



Model Number	Collet Size	Free Speed	Weight		Length		Air Consumption	
		rpm	lb	kg	in	mm	scfm	l/s
0.3 hp (0.22 kW) - Compact Size								
5053C	1/4	26000	0.8	0.4	5.3	135	28	13
0.5 hp (0.37 kW) - Mid Size								
5054C	1/4	22000	1.3	0.6	6.5	165	28	13
5054C-19K	1/4	19000	1.3	0.6	6.5	165	28	13
5054CM6	6mm	22000	1.3	0.6	6.5	165	28	13

General: Air Inlet Size: 1/4" NPT • Recommended Hose Size: 3/8" (10 mm) • Performance rated @ 90 psig (6.2 bar) air pressure

Standard Equipment: Parts List • Safety and Instruction Manual • Spindle Wrenches



ABRASIVE

RIGHT ANGLE DIE GRINDERS



5055C

Features:

- Lockoff Lever Throttle
- Comfort Grip
- Rear Exhaust
- Built-in Speed Regulator

Right Angle Die Grinders



Model Number	Collet Size	Free Speed	Weight		Length		Head Height		Air Consumption	
		rpm	lb	kg	in	mm	in	mm	scfm	l/s
0.3 hp (0.22 kW) - Compact Size										
5055C	1/4	20000	1.1	0.5	5.5	140	2.9	74	28	13
0.5 hp (0.37 kW) - Mid Size										
5056C	1/4	16200	2.0	0.9	7.5	190	3.0	76	28	13



5056C

General: Air Inlet Size: 1/4" NPT • Recommended Hose Size: 3/8" (10 mm) • Performance rated @ 90 psig (6.2 bar) air pressure

Standard Equipment: Parts List • Safety and Instruction Manual • Spindle Wrenches

RIGHT ANGLE TYPE 27 WHEEL GRINDERS

Features:

- Lockoff Lever Throttle
- Front Exhaust
- Built-in Speed Regulator

Right Angle Heavy Duty Grinders



Model Number	Free Speed	Weight		Length		Head Height		Air Consumption		Spindle Size
	rpm	lb	kg	in	mm	in	mm	scfm	l/s	
0.85 hp (0.63 kW) - 4 1/2" (115 mm) Right Angle Heavy Duty Grinder										
5268C	12000	3.9	1.7	10.0	254	3.5	90	28	13	5/8" - 11
0.85 hp (0.63 kW) - 5" (127 mm) Right Angle Heavy Duty Grinder										
5285C	12000	3.9	1.7	10.0	254	3.5	90	28	13	5/8" - 11

General: Air Inlet Size: 1/4" NPT • Recommended Hose Size: 3/8" (10 mm) • Performance rated @ 90 psig (6.2 bar) air pressure

Standard Equipment: Parts List • Safety and Instruction Manual • Spindle Wrenches



5268C



5285C

CUT-OFF TOOL (TYPE 1)

Features:

- Lockoff lever throttle
- Comfort Grip
- Rear exhaust

Cut-off Tool



Model Number	Free Speed	Blade Diameter		Weight		Length		Air Consumption		Spindle Size
	rpm	in	mm	lb	kg	in	mm	scfm	l/s	
0.5 hp (0.37 kW) - 3" Cut-off Tool										
5564C	21000	3.0	76	1.8	0.08	8.0	203	28	13	3/8" - 24

General: Air Inlet Size: 1/4" NPT • Recommended Hose Size: 3/8" (10 mm) Performance rated @ 90 psig (6.2 bar) air pressure

Standard Equipment: Parts List • Safety and Instruction Manual • Spindle Wrenches



5564C



FINISHING

Making It Easy To Finish The Work

If you're in the market for tough tools that will deliver the performance you demand, then you've found what you need with Force sanders. These exceptional tools take on any application from repair and maintenance to manufacturing. Get your work done faster and more efficiently than ever.



SANDERS & POLISHERS



5540C

Features:

- Aluminum Housing
- Built-in Speed Regulator
- Comfort Grip

Pistol Grip Sander



Model Number	Free Speed	Weight		Length		Air Consumption		Spindle Thread
	rpm	lb	kg	in	mm	scfm	l/s	
0.6 hp (0.45 kW)								
5540C	13000	2.2	1.0	4.3	109	28	13	7/16"-20

General: Air Inlet Size: 1/4" NPT • Recommended Hose Size: 3/8" (10 mm) • Performance rated @ 90 psig (6.2 bar) air pressure
Standard Equipment: 3" (75 mm) and 4-1/2" (115 mm) backing pads • Parts List • Safety and Instruction Manual • Spindle Wrenches



5265C

Features:

- Lockoff lever throttle
- Built-in speed regulator
- Rear exhaust

5" (125 mm) Right Angle Air Sander



Model Number	Free Speed	Weight		Length		Air Consumption		Spindle Thread
	rpm	lb	kg	in	mm	scfm	l/s	
0.7 hp (0.5 kW)								
5265C	7000	2.9	1.32	9.4	1.32	33	16	5/8"-11

General: Air Inlet Size: 1/4" NPT • Recommended Hose Size: 3/8" (10 mm) • Performance rated @ 90 psig (6.2 bar) air pressure
Standard Equipment: Backing pad for 5" (125 mm) abrasives • Parts List • Safety and Instruction Manual • Spindle Wrenches



SANDERS

Features:

- Lockoff lever throttle
- Support handle can be mounted on either side
- Rear exhaust

7" (175 mm) Right Angle Sander



Model Number	Free Speed	Weight		Length		Air Consumption		Spindle Thread
	rpm	lb	kg	in	mm	scfm	l/s	
0.7 hp (0.5 kW)								
5287C	6000	4.4	2.0	12.6	320	35	17	5/8"-11



5287C

General: Air Inlet Size: 1/4" NPT • Recommended Hose Size: 3/8" (10 mm)

Performance rated @ 90 psig (6.2 bar) air pressure

Standard Equipment: Backing pad for 7" (175 mm) abrasives • Parts List
Safety and Instruction Manual • Spindle Wrenches

Features:

- Built-in speed regulator
- Dual action sanding
- Vinyl grip and head cover

Dual Action Sander



5558C

Model Number	Orbit Diameter		Free Speed	Weight		Height		Air Consumption	
	in	mm	rpm	lb	kg	in	mm	scfm	l/s
0.7 hp (0.5 kW)									
5558C	3/8	10	10000	4.3	2.0	5.4	137	28	13

General: Air Inlet Size: 1/4" NPT • Recommended Hose Size: 3/8" (10 mm) • Performance rated @ 90 psig (6.2 bar) air pressure

Standard Equipment: 6" (150 mm) backing pad • Parts List • Safety and Instruction Manual

Features:

- Dual handles
- Positive lock paper clamps
- Paper size: 2-3/4" x 17-1/2" (70 x 445 mm)

Dual Piston Inline Sander



5560

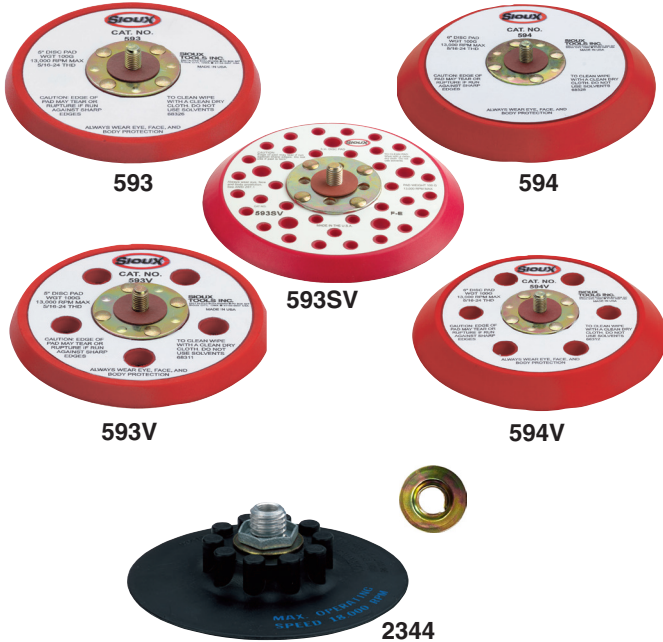
Model Number	Strokes Per Minute	Weight		Length		Air Consumption	
		lb	kg	in	mm	scfm	l/s
5560	2500	6.8	3.1	16.0	406	21	10

General: Air Inlet Size: 1/4" NPT • Recommended Hose Size: 3/8" (10 mm) • Performance rated @ 90 psig (6.2 bar) air pressure

Standard Equipment: Backing pad • Parts List • Safety and Instruction Manual



FINISHING ACCESSORIES



Orbital Sander Backing Pads

Sioux random orbital backing pads are medium density, urethane pads rated for speeds up to 13,000 rpm. The 5" pads are 3/8" thick with low profile design, while the 6" pads are 5/8" thick with tapered profile for fine feathering in corners or around edges.

Part Number	Diameter		Backing	Profile	Style
	in	mm			
593	5	125	PSA ¹	Low	Non-Vac
593V	5	125	PSA ¹	Low	Vacuum
593J	5	125	H&L ²	Low	Non-Vac
593JV	5	125	H&L ²	Low	Vacuum
593SV	5	125	PSA ¹	Low	Screen Vac
594	6	150	PSA ¹	Tapered	Non-Vac
594V	6	150	PSA ¹	Tapered	Vacuum
594J	6	150	H&L ²	Tapered	Non-Vac
594JV	6	150	H&L ²	Tapered	Vacuum
594SV	5	125	PSA ¹	Low	Screen Vac

¹ PSA - Vinyl face for pressure sensitive adhesive sanding discs

² H&L - Hook and loop face

Part Number	Thread	Diameter	
		in	mm
2344	3/8-24 & 5/8-11	5	125

Includes disc nut 30750

Fibre Backing Discs

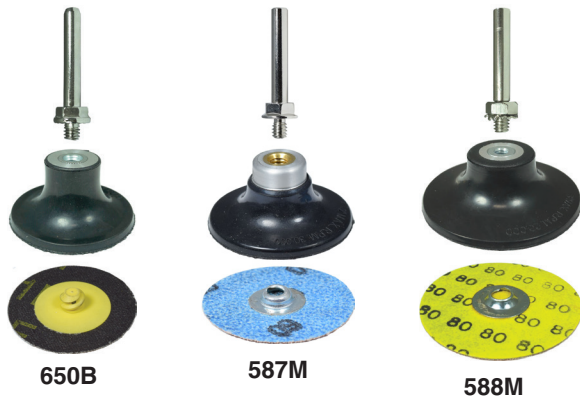
Part No. 586

For use on 5540 series sander
 Packaged in cartons of 6
 Qty 3 - 3" (75 mm)
 Qty 3 - 4-1/2" (110 mm)
 Both have 7/8" (22 mm) arbor hole



Speed-Lok Backing Pads

For use on tools with 1/4" collets



Part Number	Diameter		For Use On
	in	mm	
5205+	5	125	5265
5207*	7	180	5287A

*includes disc nut No. 67630

+does not include disc nut No. 67630 (order separately)

Features:

1/4" Shank
 1/4"-20 Thread

Part Number	Type	Diameter		Max. rpm
		in	mm	
650B	R (plastic)	2	50	30000
587M	S (metal)	2	50	30000
588M	S (metal)	3	75	20000

*Sanding Disc Not Included



SP505079

Part Number	Diameter		For Use On
	in	mm	
SP505079	2.75 X 17.5	70 X 445	5560



PERCUSSIVE

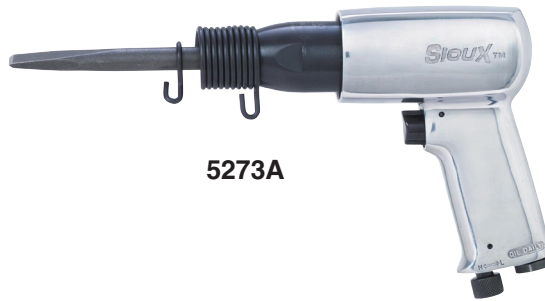
Hammering Home A Point

Percussive tools, such as hammers, chippers and scalers, are commonly used in very abusive environments found in industries such as Foundry and Construction. Sioux Tools offers a variety of sizes, capacities and accessories built durable to ensure long life under tough operating conditions. We build them to work hard on the job, but not on you!

HAMMERS



5272A



5273A



5274A

Features:

- Spring retainer
- Accepts 0.401 Parker Taper shanks
- Hardened steel barrel and piston
- Built-in Air Regulator
- Aluminum housing

Hammers



Model Number	Stroke Length		Bore Diameter		Blows Per Minute	Weight		Length	
	in	mm	in	mm		lb	kg	in	mm
5272A	1.6	41	0.8	20	4800	3.0	1.4	5.8	147
5273A	2.6	66	0.8	20	3200	3.8	1.7	7.1	180
5274A	3.8	97	0.8	20	2200	4.7	2.1	9.3	236

General: Air Inlet Size: 1/4" NPT • Recommended Hose Size: 3/8" (10 mm) • Performance rated @ 90 psig (6.2 bar) air pressure

Standard Equipment: Parts List • Safety and Instruction Manual

SCALERS



5262



5263



5266

Features:

- Steel housing
- Hardened steel barrel and piston

Scalers



Model Number	Needles Included	Needle Length		Stroke Length		Bore Diameter		Blows Per Minute	Weight		Length	
		in	mm	in	mm	in	mm		lb	kg	in	mm
5262	19	7	180	3.0	75	0.9	23	3000	5.7	2.6	13.5	340
5263	12	5	125	2.0	51	0.7	18	4000	2.6	1.2	11.4	290
5266	19	7	180	2.0	51	1.0	25	4000	5.7	2.6	16.1	409

General: Air Inlet Size: 1/4" NPT • Recommended Hose Size: 3/8" (10 mm) • Performance rated @ 90 psig (6.2 bar) air pressure

Standard Equipment: Parts List • Safety and Instruction Manual

PERCUSSIVE



PERCUSSIVE ACCESSORIES



Beehive Spring Retainers

Part Number	Description
2207	Chisel Retainer Spring (Use with all except those listed below)
2208	Must use 2208 with 2201B, 2205, 2216, 2217B, and 2219, 2220, 2239, 2244, 2245, 2246, 2247

.401 Parker Taper Shank



270 Rivet Sets

3-1/2" Overall Length

Rivet Head Cupping	Rivet Diameter Size				
	3/32" Part No	1/8" Part No	5/32" Part No	3/16" Part No	1/4" Part No
Button Head	N/A	2229	2230B	2231	2244*
Round Head	2232	2233	2234B	2235	2245*
Brazier Head	2236	2237B	2238	2239	2246*
Universal Head	2240	2241B	2242B	2243B*	2247*

3-1/2" (90 mm) overall length

* Use 2208 Retainer



Hammer Chuck

Part Number	Description	For Use ON
2270	Quick change air hammer chuck	5272A, 5273A, 5274A



Scaling Needles

Part Number	Diameter	Length	Quantity	Used On
2259	0.12"	5"	12	Scalers
2260B	0.12"	5"	19	Scalers
2262	0.12"	7"	19	Scalers

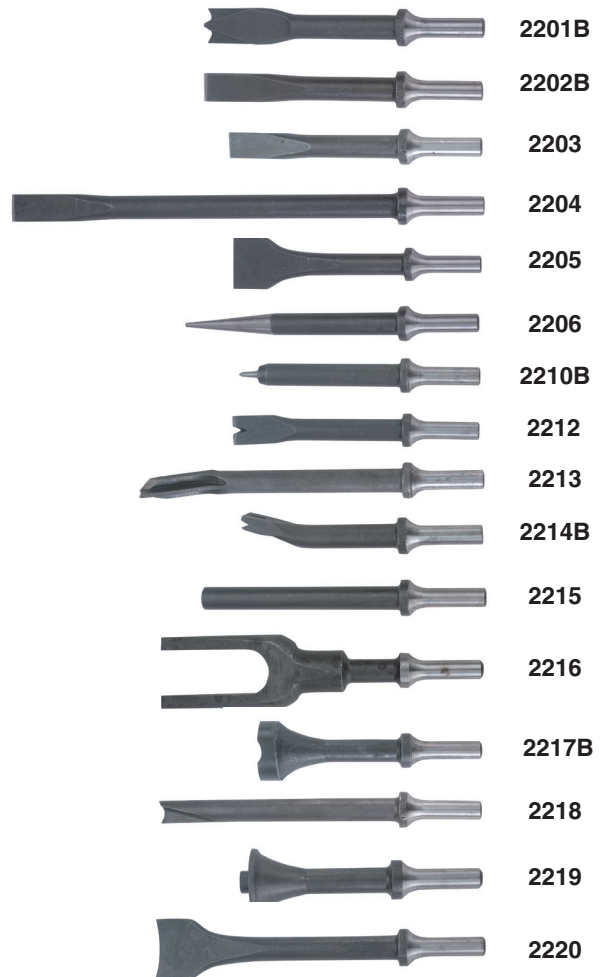


Hammer Accessories

.401 Parker Taper Shank

Part Number	Description	Width		Length	
		in	mm	in	mm
2201B*	Cutter	5/8	16	6	150
2202B	Chisel	5/8	16	6	150
2203	Rivet Buster	5/8	16	5-1/2	140
2204	Expansion Chisel	5/8	16	11	280
2205*	Scraper	1-1/4	30	6	150
2206	Punch			7	175
2210B	Punch			5	127
2212	Spot Weld Breaker			6	150
2213	Splitter			8	200
2214B	Edging Chisel			5	140
2215	Blank Chisel			6	150
2216*	Fork Chisel			6-7/8	175
2217B*	Rust Breaker			5-1/4	135
2218	Bushing Cutter			7	175
2219*	Bushing Driver			4-1/2	115
2220*	Bushing Chisel	1-5/8	40	7	175

* Use 2208 or 2270 Retainer





SPECIALTY

Special Applications Require Special Tools

Sioux Tools has a history of designing specialty tools for very specific applications, and as always, we manufacture the finest tools in the industry. These tools will live up to your expectations in both power and ergonomics.



RECIPROCATING AIR SAW



5300A

Features:

- Comfort Grip Handle
- Adjustable Blade Guard
- Lockoff Lever Throttle
- Built-in Speed Regulator

Reciprocating Air Saw



Model Number	Strokes Per Minute	Weight		Length	
		lb	kg	in	mm
5300A	10000	1.8	0.8	9.2	235

General: Air Inlet Size: 1/4" NPT • Recommended Hose Size: 5/16" (8 mm)
Performance rated @ 90 psig (6.2 bar) air pressure

Standard Equipment: Parts List • Safety and Instruction Manual



1823

Bi-Metal Saw Blade (5 Pack)

Part Number	Description	Length
1823	Bi-Metal Blade - 18 TPI	4" (100mm)
1824B	Bi-Metal Blade - 24 TPI	4" (100mm)
1825	Bi-Metal Blade - 32 TPI	4" (100mm)

AIR ENGRAVING PEN



5980

Features:

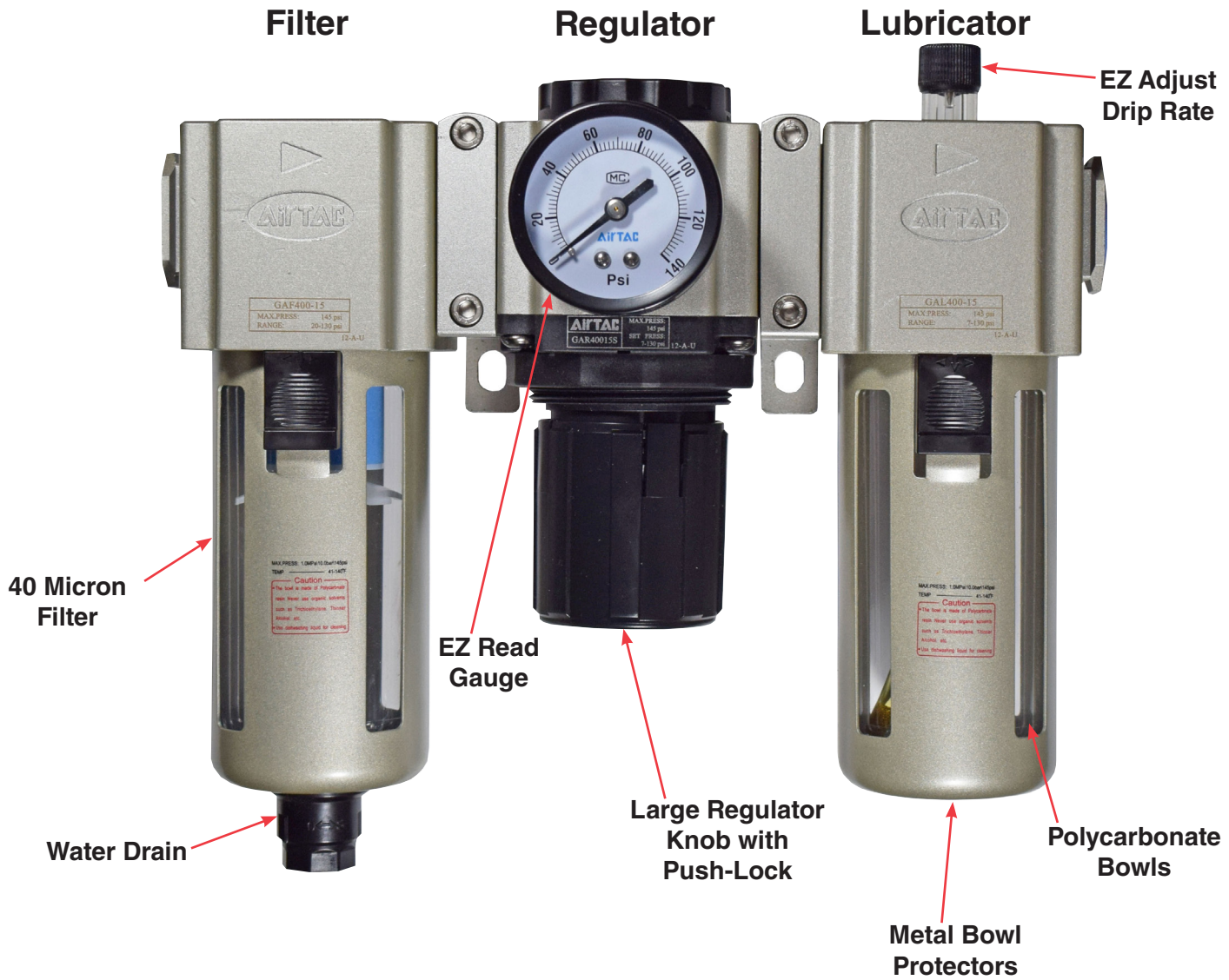
- 13,000 cycles per minute
- Replaceable carbide tipped points
- Twist throttle
- 59" (1500 mm) hose
- 1/4" NPT air fitting
- High quality stainless steel housing
- Replaceable engraving points

- 506246 - 45° (STD)
- 506245 - 30°
- 506244 - 15°





Filter, Regulator, Lubricator Assembly



Filter, Regulator, Lubricator Assembly



Part Number	Inlet & Outlet	Height		Width		Depth		Bracket Spacing	
		in	mm	in	mm	in	mm	in	mm
1670	1/2" NPT	8.9	227	9.8	248	3.9	100	3.3	84



GENERAL ACCESSORIES

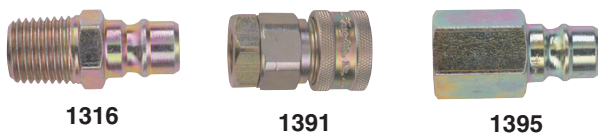
Sioux Swivel

Allows the air hose to rotate 360° on 2 axes



Part Number	Description
1338-25	1/4" non-regulated air swivel connector with safety pin
1338-38	3/8" non-regulated air swivel connector with safety pin
1338-50	1/2" non-regulated air swivel connector with safety pin
1338FC-25	1/4" regulated air swivel connector with safety pin

High-Capacity Quick Change Couplers



Part Number	Description	Thread
1316	Male Coupler Nipple	1/4" NPT
1317	Male Coupler Nipple	3/8" NPT
1318	Male Coupler Nipple	1/2" NPT
1391B	Quick Change Coupler	1/4" NPT
1392B	Quick Change Coupler	3/8" NPT
1393	Quick Change Coupler	1/2" NPT
1395	Female Coupler Nipple	1/4" NPT
1396	Female Coupler Nipple	3/8" NPT

Air Regulator

Part No. 1335B
1/4" NPT Male / Female



Nylon Recoil Air Hose



1326

Part Number	ID		Length		Fittings
	in	mm	ft	m	
1326B	1/4	6	25	7.6	1/4" NPT
1327B	3/8	10	25	7.6	1/4" NPT

Grease Gun

Part No. 439

Use with impact wrenches and multi-assembly angle tools.
For use with grease tube 1232A-04.



Grease Nozzle

Part No. 469A

Used with No. 468A grease gun.



Grease

Part Number	Description
289A	4 Ounces
289A-1	2 Pounds
289A-2	6 Pounds
1198	6 Ounces
1198-1	2 Pounds
1198-2	6 Pounds
1232A-04	4 Ounces
1232A-1	1 Quart

Air Motor Oil For Air Tools

Part No. 288

1/2 Pint

Part No. 288-1

1 Quart

Part No. 288-2

2 Liter





ALABAMA

Dothan
Brackin Wholesale Coatings
725 South Oates St.
36301
334-793-4330

Winfield
McCaleb Tool Supply
710 Hwy 43 South
35594
205-487-2222

ARIZONA

Phoenix
Glenn's Tool Service
2149 East Indian School Rd.
85016
602-264-6203

ARKANSAS

Hot Springs
Arkansas Welding, Inc.
230 Valley St.
71901
501-321-9922

CALIFORNIA

Buena Park
Three Day Tool, Inc.
6767 8th St.
90620
714-521-9180

Rancho Dominguez
U.S. Air Tool Company
1219 W. Mahalo Pl.
90220
310-632-5400

Sonoma
Fastening Systems
International, Inc (FSI)
1206 E. MacArthur St.
95476
800-344-2393

FLORIDA

Clearwater
Florida Precision Tool
21933 US 19 N
33765
727-373-4410

Doral
Air/Electric Tool & Equipment
7840 Nw 58th St.
33166
305-593-5040

Port Charlotte
Tropical Construction Supply
18412 Paulson Dr.
33954
941-743-5863

Spring Hill
R & R Tool Repair, Inc.
13591 Linden Dr.
34609
352-263-3587

GEORGIA

Atlanta
Fastenal
6215 Fulton Industrial Blvd.
30336
404-346-1026

Blairsville
Production Tool and
Technology
168 Payton Place
30512
478-781-8415

IOWA

Bloomfield
Gingerich Logging & Supply
16700 Jade Ave.
52537
641-722-3414

Des Moines
Peerless Supply Inc.
1701 Guthrie Ave.
50316
515-265-9905

Sioux City
The New Sioux City Iron Co.
310 South Floyd Blvd.
51101
712-255-7696

ILLINOIS

Machesney Park
Engman-Taylor Co Inc.
7980 Burden Rd.
61115
800-236-7282

INDIANA

Bristol
Tool Shed
220 E Vistula St.
46507
574-848-7815

Ferdinand
Superb Tooling, Inc.
250 Scenic Industrial Dr.
47532
812-367-2102

Indianapolis
Alcorn Industrial Inc.
5412 Rock Hampton Court
46268
317-872-6772

Indianapolis
Fastenal
3939 W 56th St.
46254
317-472-4341

Indianapolis
Vamaco Tool & Equipment Co.
6718 East 38th St.
46226
317-632-2208

KANSAS

Shawnee
Clark's Tool Repair
6217 Goddard St.
66203
913-268-1271

KENTUCKY

Louisville
Rhino Assembly Service
Center
3600 Chamberlin Ln., Suite
618
40214
502-753-0602

LOUISIANA

Harahan
ATR, LLC
629 S. Al Davis Rd.
70123
504-739-9481

New Orleans
Beerman Precision Inc.
4206 Howard Ave.
70125
504-486-9391

MARYLAND

Cockeysville
Air Power-Baltimore
243 Cockeysville Rd.
21030
410-785-5790

MASSACHUSETTS

Everett
Panda Electrical Service
165 Main St.
02149
617-389-1442

MINNESOTA

Bloomington
Mars Supply
215 E. 78th St.
55420
952-884-9388
800-862-6093

Duluth
Mars Supply
4319 W. 1st St.
55807
218-628-0303

Little Falls
Central McGowan
16444 11th St. NE
56345
320-632-9218

Minneapolis
Deko Factory Service
3048 Bloomington Ave So
55407
612-721-6651

Winona

Fastenal
2003 Theurer Blvd.
55987
507-313-7527

MISSOURI

St. Louis
John Henry Foster
4700 LeBourget Dr.
63134
314-427-0600

Farmington
US Tool Group
2000 Progress Dr.
63640

1-800-222-1771

Fenton
Productive Tool Products, Inc.
1075 Headquarters Park Dr.
63026
636-305-1200

Maryland Heights
Logan Gresham, Ltd
2320 Mill Park Dr.
63043
314-521-2400

MISSISSIPPI

Tupelo
Compressors & Tools Inc.
105 Old Runway Rd.
38801
662-844-7023

NEBRASKA

Omaha
JDC Tool & Repair
6263 Abbott Dr.
68110
402-455-8000

NORTH CAROLINA

High Point
Air Power, Inc. (NC)
1430 Trinity Ave.
27260
336-886-5081

High Point
Fastenal
4110 Premier Dr.
Suite 102
27265
336-888-3013

High Point
High Point Pneumatics Inc.
2430 English Rd.
27262
336-889-8416

OHIO

Apple Creek
Air Works
10680 Dover Rd.
44606
330-698-0388

Cleveland

Industrial Pneumatic
1715 Brookpark Rd.
44109
216-398-7550

Columbus

Mitchell-Mckinney Supply Co.
610 Greenlawn Ave.
43223
614-444-6732

Richfield

Ohio Tool Systems
3863 Congress Parkway
44286
330-659-4181

Youngstown

Power Tool & Supply Co.
3699 Leharps Rd.
44515
330-792-1487

OREGON

Milwaukie
Chas H Day Co, Inc.
11405 SE 37th Ave.
97222
503-232-1659

PENNSYLVANIA

Christiana
Beiler's Pneumatics
718 Vintage Rd.
17509
610-593-7064

Myerstown

Keystone Air Power
60 Elco Dr.
17067
717-866-9224

Robesonia

Rowe Sales & Services, Inc.
381 West Penn Ave.
19551
610-693-4031

TENNESSEE

Jackson
Compressors & Tools Inc.
109 Anglin Lane
38301
731-421-8068

Johnson City

Summers Hardware & Supply
Co.
400 Buffalo St.
37604
423-461-4700

Memphis

DBH Distributors, Inc.
3325 Millbranch Rd.
38116
901-348-1155



U.S. Independent Service Centers

Memphis

Pro Power, Inc.
7531 Bartlett Corp Cove E,
Suite 101
38133
901-383-7888

TEXAS

Denton

Fastenal
3833 Airport Rd.
76207
940-483-8667

Grand Prairie

CRC Inc. of Texas
1209 W. Carrier Pkwy. Ste. 300
75050
972-647-0161

Nederland

ATSCO (Associated Tool
Specialties Company)
3711 North Twin City Hwy.
77627
409-727-2166

VIRGINIA

Portsmouth

Hydraulic Service Co.
3215 Victory Blvd.
23702
757-487-2513

Roanoke

Cardinal Tools, Sales & Service,
Inc
1546 Brownlee Ave SE
24014
540-981-9359
800-542-5747

Salem

C & C Assembly
2636 West Main St.
24153
540-904-6416

WASHINGTON

Kent

Ballard Industrial
1034 Central Ave.
98032
206-267-5239

Seattle

Universal Repair Shop, Inc.
1611 Boylston Ave.
98122
206-322-2726

WEST VIRGINIA

Bluefield

Larry's Pneumatic Service,
LLC
100 Princeton Ave.
24701
304-325-9262

WISCONSIN

Green Bay

Power Tool Service Co.
1180 Ashwaubenon St.
54304
920-437-2594

Menomonee Falls

Engman-Taylor Co Inc.
W142 N9351 Fountain Blvd.
53051
800-236-1975



Canadian Independent Service Centers

ALBERTA

Calgary
HT Pneumatic Rebuilders Inc.
2168-3961 52nd Ave NE
T3J 0K7
403-798-1051

Spruce Grove

Axis Torque Ltd
302 Commerce Rd. N.
T7X 3A5
780-962-4499

MANITOBA

Winnipeg
Accutool Service Center
532 Berry St.
R3H 0R9
204-772-6523

NEWFOUNDLAND

St. John's
Rideout Tool & Machine Inc
222 Kenmount Rd.
A1B 3R2
709-754-2240

NOVA SCOTIA

Dartmouth
Rideout Tool & Machine Inc
170 Akerley Blvd.
B3B 1Z5
902-468-2060

ONTARIO

Brampton
Grip Clinch Canada
73 Ward Rd.
M9W 6P3
416-742-9161

Toronto

HT Pneumatic Rebuilders
22 Goodmark Pl
M9W 6R2
416-407-5739

London

Pryde Industrial Inc
187 Exeter Rd.
N6L 1A4
519-690-1111

QUEBEC

Laval
FGL Tools Service
949 Rue Michelin
H7L 5B6
450-972-7979

St. Laurent

Phoenix Inc.
5600 Vanden Abeels
H4S 1P9
514-334-5152

Trois Rivières

Outil Mag
2415 Rue De La Sidbec Sud.
G8Z 4M6
819-370-4848

SASKATCHEWAN

Regina
All Tool Repairs
3100 - 12th Ave.
S4T 1J7
306-352-1756

Latin America Independent Service Centers

ARGENTINA

Assembly S.R.L.
Brazin 1313 P.B. 4
Capital Federal 1154
Buenos Aires, Argentina
Phone: (54-1) 304-7390

BOLIVIA

Herracruz Importaciones
Av. Roca Y Coronado # 295
Santa Cruz de La Sierra
Sebra, Bolivia
Phone: (591) 335-41073

BRAZIL

Sebra
Snap-on-Latin
American/Caribbean Division
Rua Juscelino Kubitschek de
Oliveira 470
Distrito Industrial II
Santa Barbara D' Oeste
CEP 13456-401 SP
Brazil
Phone: (55-19) 2108-1000

CHILE

Perfect Technology Chile S.A.
Av. Americo Vespucio
Norte 2880, Of 505
El Cortijo, Conchali
Santiago, Chile
Phone: (56-2) 362-1153

COLUMBIA

Servitools LTDA
Carrera 58 Mp 14 - 14,
Zona Industrial Puente
Bogota, Colombia
Phone: (57-1) 420-3599

ECUADOR

Najomez
Mosquera Narvaez 746 y
Carvajal
Quito, Ecuador
Phone: (562) 2359845

HONDURAS

Herramientas la Atlantica
2da. Calle, 17 Ave. N.E.
Col. Universal
Carretera Vieja a La Lima
San Pedro Sula
Honduras
Phone: (504) 557-6314

MEXICO

Herramientas Holman S.A. DE C.V.
Dr. Atl 1302
Col. Roble San Nicolas
San Nicolas De Los Garza, N.I.
C.P. 66414
Phone: (81) 8353 4183

Lider Power Tools S.A. DE C.V.
Gregorio Zambrano 500
Residencial El Roble
San Nicolas De Los Garza, N.I.
C.p. 66414
Phone: (81) 8350 8517

Puebla
Puebla, Puebla, México
Tel. 222 940 0313
Whatsapp 222 531 2925

RC Maquinarias S.A. DE CV
Calzada Ignacio Zaragoza
N° 377
Col. San Pedro
Puebla, Pue
Mexico
Phone: (52-222) 222-2587

RC Maquinarias S.A. de CV
Subsidiary
Calle Diego Rivera N° 39
Privada Diego Rivera
Col. Los Alcanfores C.P. 76150
Queretaro
Que, Mexico
Phone: (52-442) 217-7435

Romihn Aguascalientes
Aguascalientes, Aguascalientes,
México
Tel. 449 555 0276
Whatsapp 449 205 4364

Romihn Cdmx (Mexico City)
Tlalnepantla, Edo. de México, México
Tel. 55 5039 1478
Whatsapp 553 408 1489

Romihn Puebla
Calle Adolfo López Mateos No. 90-B
Col. San Pedro CP 72210
Puebla, Puebla, México
Tel. 222 940 0313
Whatsapp 222 531 2925

Romihn Queretaro
Corregidora, Querétaro, México
Tel. 442 384 0144
Whatsapp 442 595 3617

Romihn Queretaro Industrial Park
Querétaro, Querétaro, México
Tel. 442 628 2176
Whatsapp 442 668 1414

Snap-on S un De Mexico,
S.A. de C.V.
Av Gustavo Baz, No. 166B
Colonia La Escuela
Tlalnepantla, Edo de Mexico
Mexico 54090
Phone: (52-55) 5010-3000
www.snapon.com.mx

Snap-on Sun De Mexico,
S.A. de C.V.
Gustavo Baz No 180-F
Tlalnepantla, Edo. de Mex.
CP 54090
Phone: (55) 5010 3060
contactanos@snapon.com

NICARAGUA

Sistemas de
Seguridad Buhler S.A.
Contiguo donde fue
Cine Dorado
Bolonia, Managua
Nicaragua
Phone: (505) 2222-6833

PARAGUAY

H Petersen
Av. Artigas 1552
Asuncion, Paraguay
Phone: (595-21) 202-615

PERU

Energotec S.A.
Calle Los Plasticos 204
Ate- Lima 3
Peru
Phone : (51-1) 348-7570

Igardi Herramientas S.A.
Av. Javier Prado (FSTE) #1131
Lima, Peru
Phone : (30-5) 887-3533

VENEZUELA

Reffiteca
Calle E. Boleita Norte
Edificio Alexandro
Local A. Semisotano
Caracas, Venezuela
Phone: (58-212) 235-8042

Hermaco
Av. Intercomunal N° 428
Ciudad Ojeda
Estado Zulia, Venezuela
Phone : (58-65) 260-994

UK and Europe Independent Service Centers

UK

Snap-on Tools LTD Repair Centre
Telford Way Industrial Estate
Kettering, Northants
NN168 PU, Great Britain
Phone: 011-44-1536-413903

POLAND

Tri Color Industrial
Ojcowska 110
Cracow 31-344
Phone: (48) 12-642-27-23

THE NETHERLANDS

JCO Tools en Services
Berkensblad 19
3233 SR Oostvoorne
(Zuid-Holland)
Phone: (31) (0) 657829507



Service

Factory Authorized Service

Sioux Tools has Authorized Service Distributors conveniently located throughout the U.S., Canada and internationally to provide you with service virtually anywhere, anytime. Each is staffed with professional tool repair technicians who know Sioux tools, inside and out, and are able to provide complete and comprehensive repairs.

Each location features the newest in testing and inspection equipment to ensure your tool is repaired and serviced properly...the first time.

Every tool that is serviced or repaired is calibrated and tested to the latest standards guaranteeing you the best performance possible.

See inside back cover for a complete listing of Authorized Service Distributors.



Training

Committed to your Success

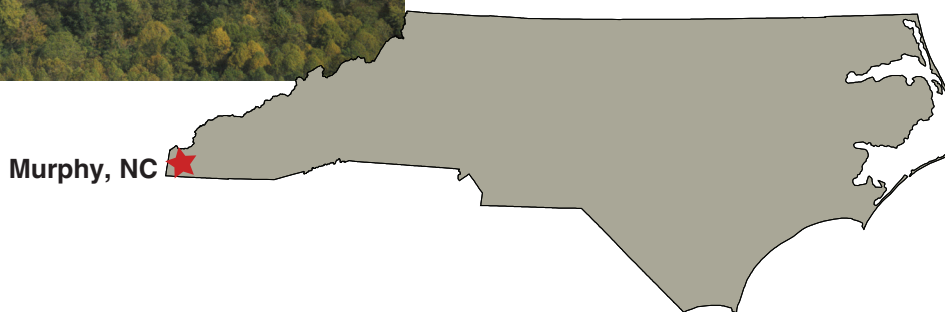
To ensure your personnel are knowledgeable about not only Sioux products, but all air tools and products, Sioux Tools conducts training seminars that cover all aspects of the tools we sell. We offer introductory training seminars to help you understand our entire line of tools and their basic operation. Advanced training is tailored to individual needs to help build the skill of an experienced student. In addition, hands-on training is available with particular focus on troubleshooting and repairing.

For additional information on Sioux Tools training seminars, please contact your Sioux Tools Sales Representative.

Facility



Our 168,000 ft² facility in Murphy, North Carolina employees approximately 300 associates. Tools are designed and manufactured right here, with a distribution center that ships daily around the globe.



siouxtools.com



250 Snap-on Drive
P.O. Box 1596
Murphy, North Carolina USA 28906
PH: 828.835.9765
FAX: 828.835.9685
TOLL FREE: 866.259.7291
TOLL FREE FAX: 800.722.7236

Belgium
Tel.: 32 (0)14 23 19 67
Fax: 32 (0)14 23 26 27
Email: Industrial.be@snapon.com

Netherlands
Tel.: 31 (0)88 0104000
Fax: 31 (0)88 0104010
Email: Industrial.nl@snapon.com

Latin America
Tel.: 786-254-7765
Fax: 786-534-9350
e-mail: latinamerica.caribbean@snapon.com

Germany
Tel.: 49 2104 9509-0
Fax: 49 2104 9509-99
e-mail: indus.germany@snapon.com

Italy
Tel.: 00 39 02 66 04 53 70
Fax: 00 39 02 61 29 78 15
e-mail: indus.italia@snapon.com

United Kingdom
Tel.: 44 (0) 1536-413904
Fax: 44 (0) 1536-413874
e-mail: industrialuk@snapon.com

Asia
Tel.: 65-6451-5570
Fax: 65-6451-5574
e-mail: esales.sg@snapon.com

Australia
Tel.: 61 2 9837 9100
Fax: 61 2 9624 2578
e-mail: SOTA.customerservice@snapon.com